

A wireless rainwater collecting, filtering, and storing system using a cell-phone

An-Bang Cheng¹, Min-Chie Chiu^{2,*}, and Che-Min Chiu³

¹Department of Industrial Education and Technology, National Changhua University of Education, Changhua City, Taiwan, R.O.C.

²Department of Mechanical and Automation Engineering, Chung Chou University of Science and Technology, Taiwan, R.O.C.

³Institute of Biomedical Engineering, National Tsing Hua University, Taiwan, R.O.C.

Abstract. Because of the greenhouse effect, global climate considerably changes and will worsen the water supply situations in future. Also, as can be seen in traditional reservoir, the crisis of water lacking will exacerbate due to the reservoir sedimentation. In order to widen the storage of water resources, a design of portable rain-collecting system used for irrigation and daily use for people is presented. To facilitate the monitoring and manipulating, a rainwater collecting and storing system with green energy/automation /monitoring/control function is established. Considering the electricity shortage in remote island/mountain regions, two kinds of green energy generators (wind electrical generator and solar-board electrical device) are built and linked with the system. Here, a rain detector installed onto the roof can actuate the rainwater collecting board to raise and to collect water when raining event occurs. For the purpose of water purity, water filter is also set at the entrance of the water tank. In order to efficiently store/use the rainwater, several water storage tanks in conjunction with ecological pool are preset and adjusted via the water level gauge sensors and the pipe's solenoid valve. To meet the weather-proof ability, PLC is adopted as the controller. Moreover, a human-machine-interface is login on the internet and remotely communicated with the cell phone. Consequently, a prototype of the cell-phone base automatic rainwater collecting and storing system is established.

1 Introduction

Water is essential to the human life. The supply of potable water (from natural sources, desalination or importation) needs to provide at least 100 m³/year per person [1]. Previous studies from Rosegrant [2, 3] indicated that the effects of climate change on hydrology and water resources are tremendous. It will lead to decreasing precipitation rates and increase drought events [4]. Thus, water management and infrastructure changes have been expected to improve the situation if current climate conditions continue into the future [5]. On a global view, 70 % of the freshwater resources are used for agricultural purposes, and only

*Corresponding author: minchie.chiu@msa.hinet.net

19 % for industrial and 11 % for domestic purposes (including drinking, washing, food preparation and sanitation) [6]. According to Ostrom report [7], there is an almost threefold increase in the total area of irrigated agriculture during the past century. Perry's study [8] also indicated that 20 % of total cropland (irrigated agriculture) produces more than 40 % of the world's total agricultural output. Therefore, expansion of irrigated agricultural areas is essential in nation-building processes [9]. Attempts to reuse domestic wastewater for diverse purposes, such as for agricultural irrigation, have proven to be successful in many parts of the world already [10]. Under current recycling technology, each m^3 allocated for domestic use provides between $0.6 m^3$ and $0.65 m^3$ of treated (recycled) water [11].

In addition, desalinated water has been regarded as one of the main sources of domestic and industrial water [12, 13, 14]. Israel reacted to the water crisis with an enforced building of seawater desalination facilities and wastewater treatment plants for the reuse of water and with extensive structural and price reforms. The challenges and benefits of those reforms are discussed in Bismuth *et al.* [15]. However, because desalinated water has an impact on the quality of water system, how to reduce salts to very low levels becomes a crucial issue [16, 17]. Beside, it has been seen that salt water intrusion to the coastal aquifers will considerably decrease the groundwater levels and cause the rising of salinity levels [18]. Also, a continuously lowered water level will lead to rapid salinity due to the penetration of saline water from underground sources into the aquifer [19].

Moreover, groundwater resources have been regarded as one of the essential water resources [20]. But, for a region that has a high evaporation rate and surface water runoff in mountains areas, only 10 to 14 % of the total precipitation percolates to recharge the shallow groundwater aquifers [21]. Furthermore, for aquaculture farmers on an island, the over-load pumping of underground water that is widely used in large outdoor pools [22] results in sinkholes which may ruin the aquaculture farm. For example, ten percent of Taiwan's level land is sinking, some seriously, particularly in Ilan, Changhua, Yunlin, Chiayi and Pingtung Counties. As water resources are decreasing, water may be priced according to its cost of supply in future [23]. Pricing water in this way may influence farmers' choices of crops and will encourage them to switch irrigation water away from expensive natural water into marginal (recycled and saline) water.

Nevertheless, in order to overcome this drawback, a portable rain-collecting system used in irrigation and daily use for people is presented. Considering the electricity lack at remote mountain regions and island, two kinds of green energy supply using wind electrical generation and solar board electrical generation are planned and linked to the system. Here, the system's rain detector attached onto the roof can actuate the rainwater collecting board to raise and efficiently collect water. To assure the rainwater cleanness, a filtering device installed at the entrance of first water tank is applied. In addition, to efficiently collect rainwater, several water storage tanks in conjunction with an ecological pool will be set up in advance and flexibly adjusted via the signal of tanks' level gauge sensors and the pipe's solenoid valve. Because of weather-proof characteristic, PLC is adopted as the controller. Moreover, a human-machine-interface used to login the internet and to remotely communicate with the cell phone is established. Consequently, the system having automation function and remote controlling ability can provide manpower saving and promote the rainwater storage efficiency.

2 Automatic rainwater collecting and storing system

The structure of automatic rainwater collecting and storing system is depicted in Fig. 1. Also, the related wiring diagram of the PLC connection is illustrated in Fig. 2. In order to remotely manipulate the rainwater collecting and storing system via the human/machine interface (server), the auxiliary relays defined in Table 1 have been added into the PLC's

ladder program shown in Fig. 3. Fig. 3 indicated that the auxiliary relays remarked in red can be in place of the button functions in PLC. Therefore, the human/machine interface (server) connected to the PLC can submit the command to actuate the related operation functions of the automatic rainwater collecting and storing system via the touching panel.

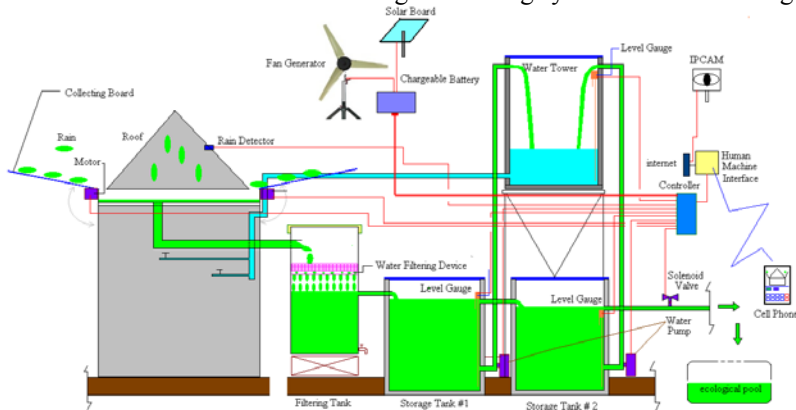
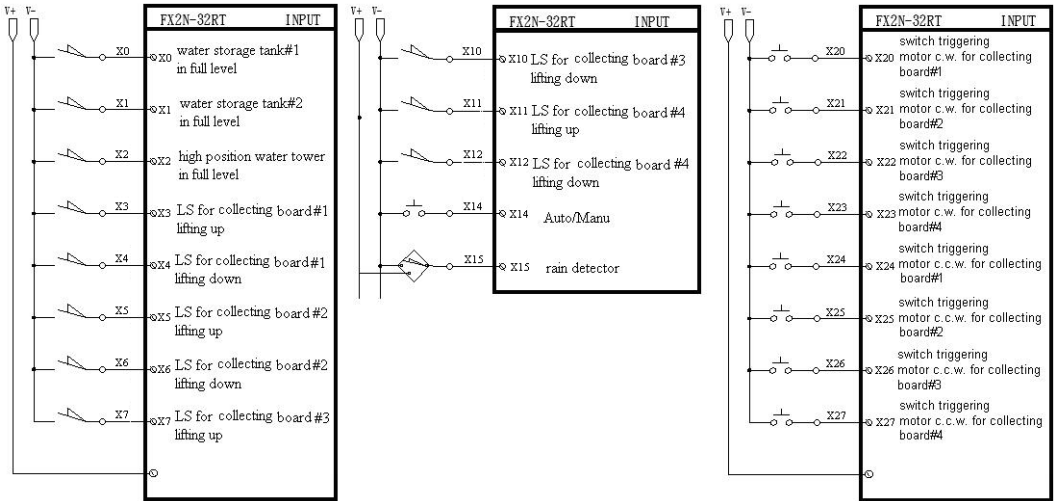
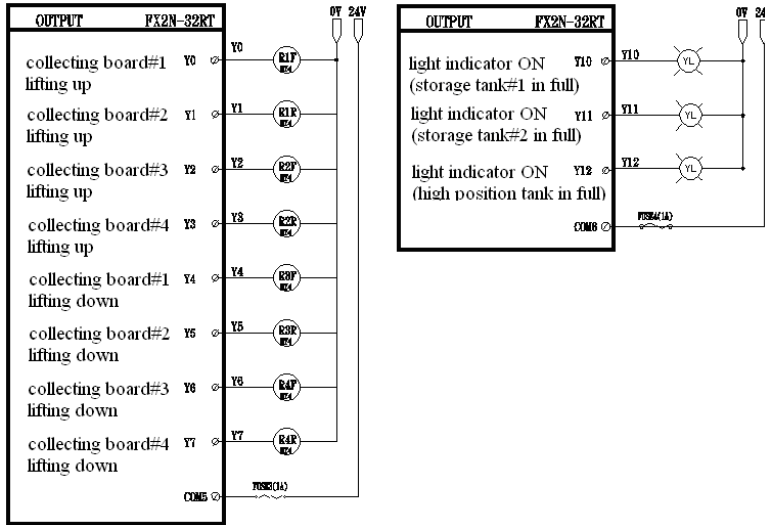


Fig. 1. The structure of the automatic waste water treatment, aeration, and retrieval system for a hybrid aquarium/plant system.

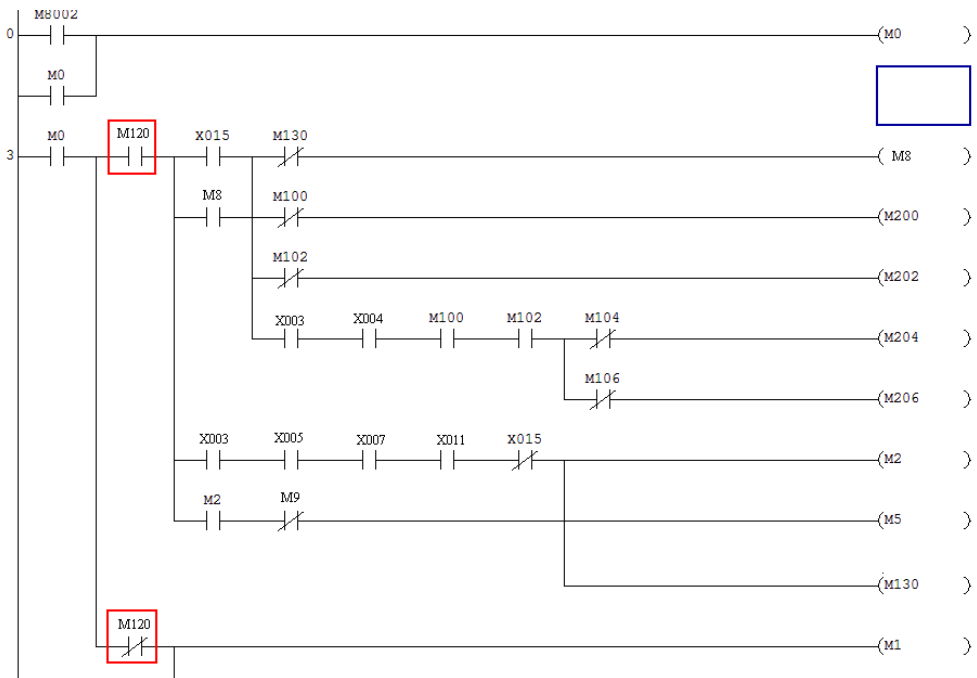


(a) PLC input.



(b) PLC output.

Fig. 2. The related wiring diagram of the PLC connection.



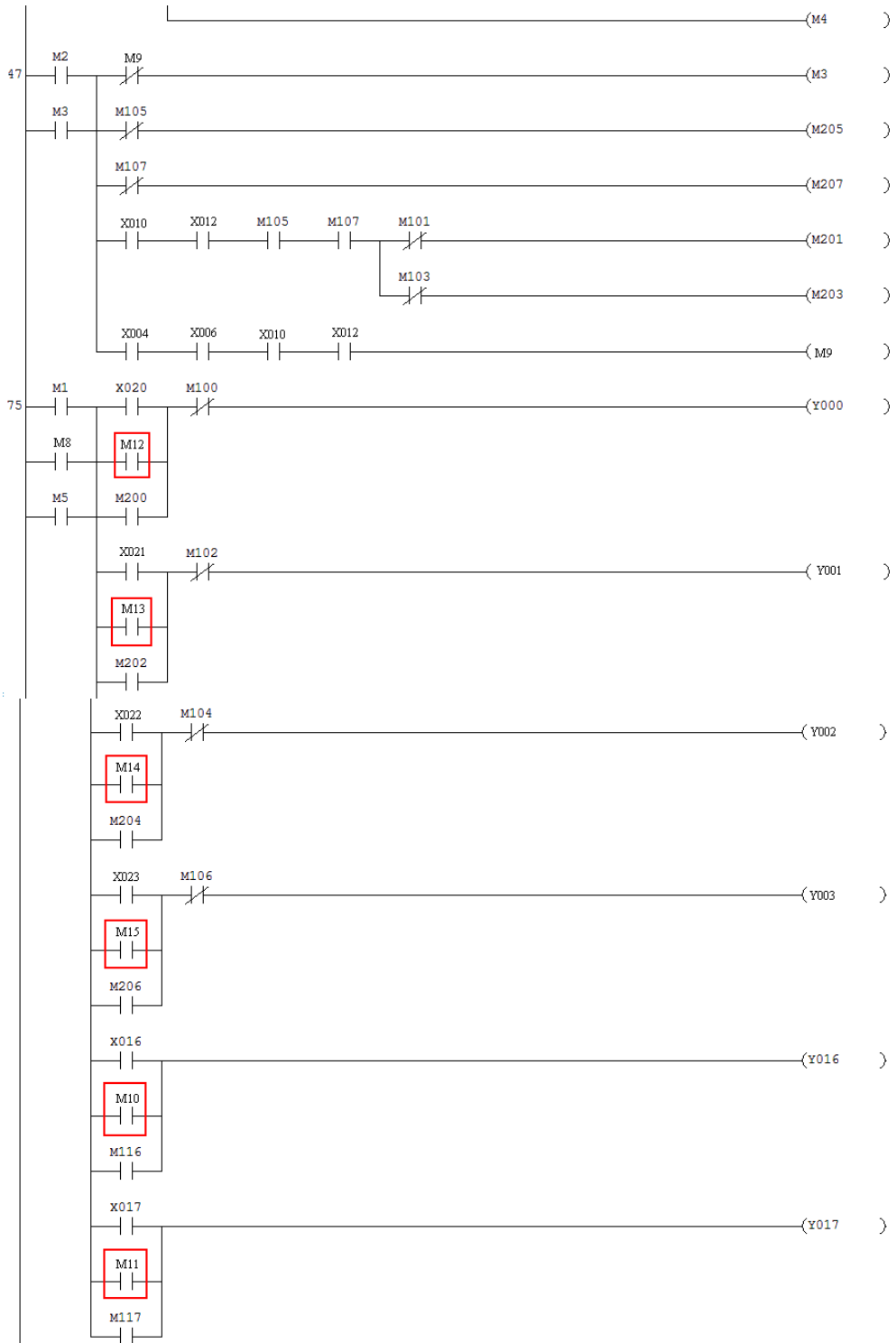


Fig. 3. The abstract of the related ladder program built in PLC.

Table 1. The auxiliary relays used to remotely control the action of the PLC program.

Auxiliary Relay Number	Action	PLC Program
M10	Water pump#1 On/Off	SET , RST M10
M11	Water pump#2 On/Off	SET , RST M11
M12	collecting board#1 Up	SET , RST M12
M13	collecting board#2 Up	SET , RST M13
M14	collecting board#3 Up	SET , RST M14
M15	collecting board#4 Up	SET , RST M15
M16	collecting board#1 Down	SET , RST M16
M17	collecting board#2 Down	SET , RST M17
M18	collecting board#3 Down	SET , RST M18
M19	collecting board#4 Down	SET , RST M19
M120	System Start Auto/Manu	SET , RST M120

As indicated in Fig. 1 and Table 1, a PLC used as a controller will actuate the actuators including four motors (for collecting board#1~#4), two water storage pumps (for water storage tank #1~#2), and one solenoid valve (for inducing superfluous rainwater to the ecological pool). The related wiring diagram of motors is depicted in Fig.4.

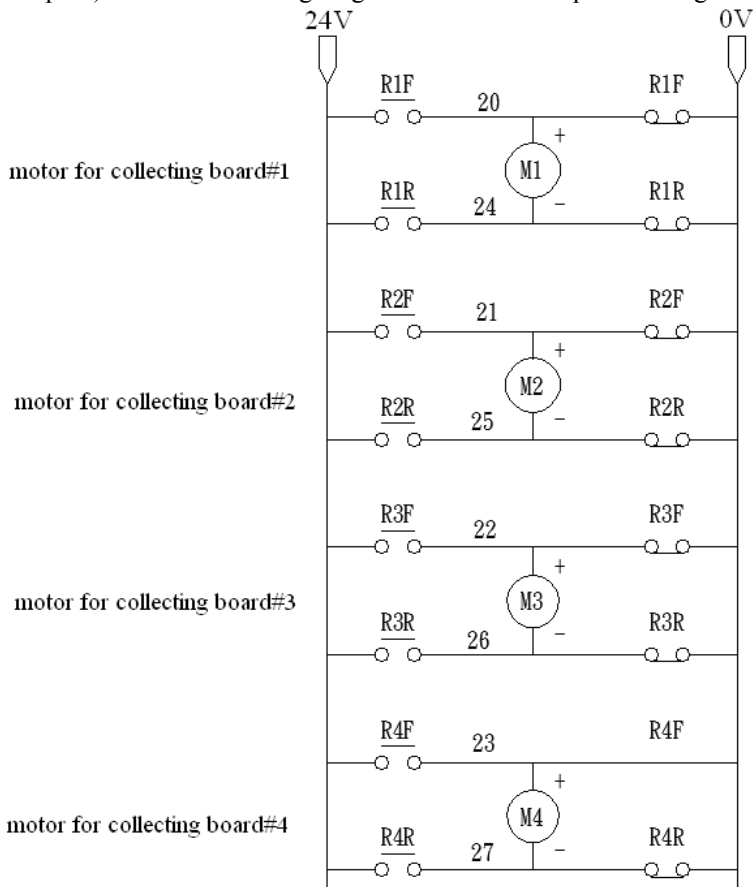


Fig. 4. The related wiring diagram of the motors.

In order to overcome the electricity lack at remote island/mountain regions, two kinds of green energy (wind electrical generator and solar board) that can provide the necessary

electrical power for people and system are applied and linked to the system. A rain detector attached onto the roof is also used for detecting the raining event. The collecting boards driven by their motors can be rotated clockwise/counter clockwise depending on the raining situation. In addition, in order to allocate the upper and lower bound for each rain-collecting board during board-lifting process, one pair of limit switches (LS) is installed at both the top and bottom sides. To realize the water levels inside the storage tank's water, three level gauges (two for water storage and one for high position water tower) are equipped. With the signals emitted from the sensors, the rainwater can be efficiently stored. In order to remotely monitor/control the rainwater collecting and storing system, a human/machine interface shown in Fig.5 is login an internet. Also, an IPCAM used to capture the site vision is set up in the system. As indicated in Fig. 6, the internet of the human/machine interface is preset. And, a wireless communication between the human/machine interface (server) and the cell phone (client) via the internet protocol is also established. Here, the human/machine interface (server) shown in Fig. 7 is used to implement the system by sending a command to the PLC controller via a touching panel's buttons.

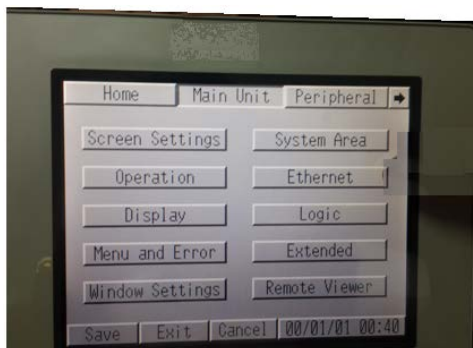


Fig. 5. A human/machine interface (Pro-face Brand).



Fig. 6. The internet setting of a human/machine interface (Proface Brand).



Fig. 7. The completed function setting of a human/machine interface (Pro-face Brand).

To facilitate communication between the PLC and the human/machine interface, a RS232/RS422 protocol is used. The picket format for the MISTISUE FX2n-PLC primary port’s communication is illustrated in Table 2. And, the definition of the picket format is depicted in Table 3. Consequently, the command description of the MISTISUE FX2n-PLC extended port’s communication protocol type 1 is shown in Table 4.

Table 2. The communication packet format of MISUBISHI FX2n-PLC’s primary port.

Header code	Command code	Address and data	End code	Inspection code
STX(02)	CMD	DATA	ETX(03)	Checksum

Table 3. The definition of communication packet for MISUBISHI FX2n-PLC’s primary port.

Command category	Object	Command code	Function description
Read	X,Y,M,S,T,C,D	0	Read the object value
Write	Y,M,S,T,C,D	1	Write data to the object
Forcing on	Y,M,S,T,C	7	Forcing node to be on
Forcing off	Y,M,S,T,C	8	Forcing node to be off

Table 4. The parameter of the extended port’s communications protocol for the MISUBISHI FX2n-PLC.

D8120Bit	Name	Content
15	Protocol type	0: type 1, 1: type 4
14	protocol	0: No, 1: Yes
13	Inspection code	0: manipulate, 1: auto
12	Type of control line (II)	none
11	DTR inspection mode	none
10	Type of control line(I)	none
9	End code	none
8	Header code	none
7	Transmission speed	0011:300 0222:4800
6		0100:600 1000:9600
5		0101:1200 1001:19200
4		0110:2400
3	Stop bit	0: 1 bit, 1: 2 bits
2	Parity check	00: none 02: even
1		01: odd
0	Data bit	0: 7 bits, 1: 8 bits

3 The communication between the server and the client

In previous studies, the TCP/IP communication between server (human/machine interface) and client (cell phone) has been established [24, 25, 26, 27]. The communication process for server (human/machine interface) and client (cell phone) is also depicted in Fig. 8 and described as below.

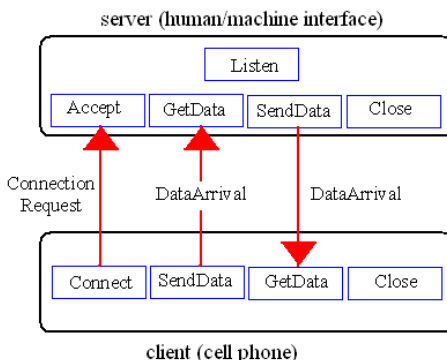


Fig. 8. The communication process between client port (cell phone) and server port (human/machine interface).

3.1 The communication process (server viewport) [28, 29]

Four steps used in the server’s communication process are

- (1) Listen:
Because the server port will establish a connection platform for the client port, the condition of "Listen" for the server port is needed. The server port waits for the connection from the client port when "Listen" is ready.
- (2) Accept:
The server port will receive an event ConnectionRequest from the client port when the client port submits a "Connect" for a further internet connection. The server port also accepts the client’s connection request using "Accept" via another WINSOCK.
- (3) GetData:
The server port receives an event "DataArrival" from the client port when the client port sends data back to the server port. At the present time, the server port will also receive data by using "GetData."
- (4) SendData:
The server port sends data to the client port by using "SendData."

3.2 The communication process (client viewport) [28, 29]

Four steps used in the client’s communication process are

- (1) Connect:
The WINSOCK in the client port submits a connection request using "Connect." At this time, the WINSOCK will assign the server port’s "Port Number" (at "Listen") to be the value of its "Remote Port."
- (2) SendData:

The client port sends the data set to the server port using “SendData” when the internet connection between the server port and the client port is built.

(3) GetData:

The client port will generate an event “DataArrival” when the server port sends a data set to the client port. For the moment, the client port can receive the data using “GetData.”

(4) Close:

The end connection using “Close” is needed when the communication is finished.

4 Results and discussions

4.1 Results

As indicated in Fig. 1, a cell-phone base automatic rainwater collecting and storing system is established. The interface of the cell phone is shown in Fig. 9. The prototype of the automatic rainwater collecting and storing system is also depicted in Fig. 10. A PLC is used as a controller to control various actuators, including four panel-lifting motors, two water pumps, and a solenoid valve. One rain detector is equipped to detect the raining event. Four pairs of limit switches installed around four pieces of the rain-collecting boards are applied to detect/confine the board position. Three sets of level gauges installed inside the water tanks and high position water tank are used to online detect the water levels. According to the water levels, water pumping process and excessive rain discharging process (to the ecological pool) can be automatically initialized. A communication between the human/machine interface (server) and the rainwater collecting/storage system is made via the RS232/RS422 protocol to the PLC. The human/machine interface (server) can implement the system function by sending a command to actuate the PLC via triggering the auxiliary relays programmed in the ladder program. Moreover, to realize current rainwater collecting and storage status, a cell phone having remote distributing, monitoring, and controlling function is built and shown in Fig. 9.

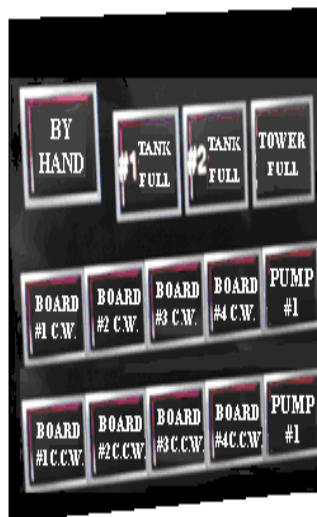


Fig. 9. The complete function setting of a cell phone.

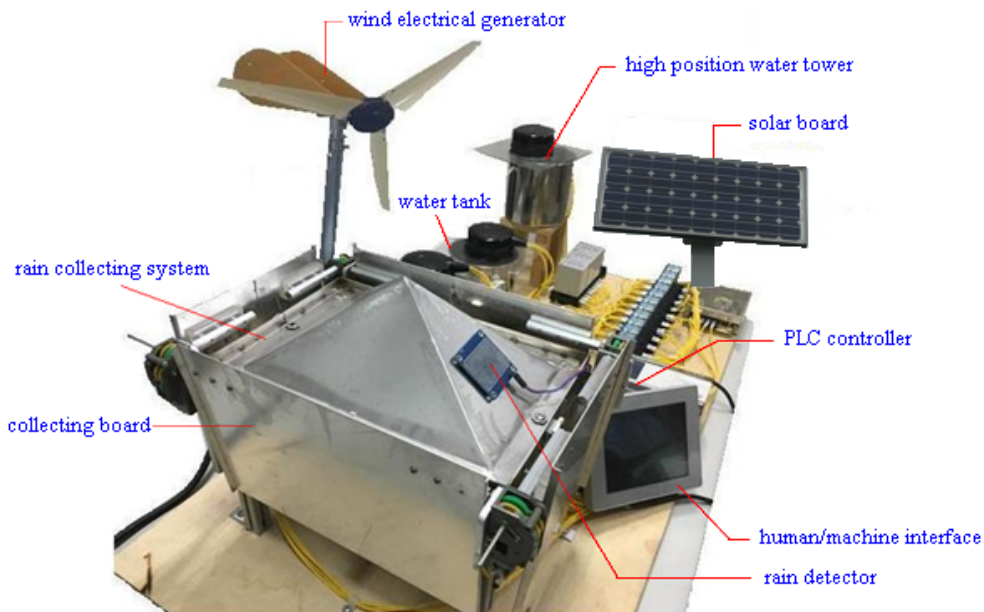


Fig. 10. A prototype of the automatic rainwater collecting and storing system.

4.2 Discussions

The main issues concerning a cell-phone base automatic rainwater collecting and storing system have

- (1) Water and green electricity supplement.
- (2) Automation in rainwater collection and storage
- (3) Manpower saving.
- (4) Efficient rainwater collection and storage using level gauge sensors and solenoid valve.
- (5) Establishing a client-server control system between the human/machine interface and the cell phone.
- (6) Assuring the operation of rainwater collecting and storage using a visual monitoring system (IP CAM).

5 Conclusions

It has been seen that to overcome the electricity lack at remote island/mountain, two kinds of green energy generators (wind generator and solar board generator) have been built and linked to the water collecting/storage system. In order to facilitate the water collecting/storage operation and improve the rainwater collecting and storage efficiency, a remote distributing, controlling and monitoring network that analyzing the online status (such as the raining event, the upper/lower limit switches for the lifting boards, and the water levels) of system and triggering related actuators (motors for lifting board, motors for water pumps, and solenoid valve for pipe outlet) is established. Here, this network is also utilized using an inquiry between the human/machine interface (server) and the cell phone (client) via the TCP/IP network.

Consequently, an automatic rainwater collecting and storage system equipped with a visual monitoring device (IP CAM) and a remote cell-phone control is established.

References

1. P. H. Gleick, *Water Int.*, **21** (1996)
2. M. Rosegrant, X. Cai, S.A. Cline, *World water and food for 2025: Dealing with Scarcity* (Int. Food Policy Research Inst., 2002)
3. M. Rosegrant, S. Msangi, C. Ringler, T. B. Sulser, T. Zhu, S. A. Cline, *International model for policy analysis of agricultural commodities and trade (IMPACT): model description* (Int. Food Policy Research Inst., 2008)
4. IPCC, *Climate change 2013: the physical science basis. working group I contribution to the fifth assessment report of the intergovernmental panel on climate change* (Cambridge University Press, 2013)
5. T. Zhu, C. Ringler, *Climate change implications for water resources in the limpopo river basin* (Int. Food Policy Research Inst., 2010)
6. FAO, *Aquastat – the FAO’s global water information system* (Food and Agriculture Organization of the United Nations, FAO, 2010)
7. E. Ostrom, *The rudiments of a theory of the origins, survival, and performance of common property institutions* (In: Bromley D (ed) *Making the Commons Work: Theory, Practice, and Policy*. ICS Press, 1992)
8. C. Perry, *Irrigation Drain*, **56** (2007)
9. H. Kreutzmann, *From upscaling to rescaling – the fergana basin’s transformation from tsarist irrigation to water management for an independent uzbekistan* (In : Huettl RF, Bens O, Bismuth C, Hoechstetter S (eds) *Society – water – technology: a Critical Appraisal of Major Water Engineering Projects*. Springer, 2015)
10. G. Oron, C. Campos, L. Gillerman, *Agriculture Water Management*, **38** (1999)
11. A. Cohen, D. Feiman, M. Ladal, *Sewage collection and treatment for irrigation: national survey 2006/2007/2008*
(http://siteresources.worldbank.org/EXTREDSEADEADSEA/Resources/5174616-1416839444345/RSDS-Summary_of_Final_FS_Report.pdf)
12. A. Mangoosh, *Integrated vision for water resources environment for UAE. office of H.H. the President* (Department of Water Resources Studies, Abu Dhabi, UAE, 2004)
13. M. Mohamed, A. Almualla, *Water Resources Management*, **24**(14) (2010)
14. M. N. S. Mohamed, M. Sherif, *Bulletin of Environmental Contamination and Toxicology*, **84**(4) (2010)
15. C. Bismuth, B. Hansjurgens, I. Yaari, *Technologies, Incentives and cost recovery: is there an Israeli role model?* (In: Huettl RF, Bens O, Bismuth C, Hoechstetter S (eds) *Society – water – technology: a Critical Appraisal of Major Water Engineering Projects*. Springer, 2015)
16. N. Kedmi, N., *Integrated water resources management in Israel* (2005)
(http://www.unece.org/fileadmin/DAM/env/water/meetings/payment_ecosystems/Disc_papers/Israel.pdf)
17. R. F. Hüttl, O. B. C. Bismuth, S. Hoechstetter, *Water resources development and management* (Springer, 2016)
18. D. Markel, U. Shamir, P. Green, *Operational management of lake kinneret and its watershed* (In: Zohary T, Sukenik A, Nishry A (eds) *Lake Kinneret. Ecology and Management*. Springer, 2014)
19. M. Haran, R.. Samuels, S. Gabbay, *Israel J. Chem.*, **42** (2008)
20. M. M. Mohamed, N. Al-Suweidi, A. Ebraheem, M. Al Mulla, *J. of Water Resource and Hydraulic Eng.*, **4**(4) (2015)
21. ESCWA, *Water scarcity in the Arab world* (Population and Development Report. Beirut, Lebanon, 2003)

22. M. Addington, D. L. Schodek, *Smart materials and technologies for the architecture and design professions* (Elsevier, 2004).
23. Y. Tsur, *Annual Rev. Resour. Econ.*, **1** (2009)
24. H. C. Cheng, M.C. Chiu, C.L. Huang, P.C. Chuo, *Inf. Tech. J.*, **11**(6) (2012)
25. H. C. Cheng, M.C. Chiu, *Appl. Mech. and Mat.*, **336-338** (2013).
26. H. C. Cheng, M.C. Chiu, *J. Inf. & Opt. Sciences*, **34**(6) (2013).
27. M. C. Chiu, H.C. Cheng, *J. Interdisciplinary Math.*, **18**(5) (2015)
28. H. C. Cheng, C.B. Chiou, M.C. Chiu, *J. Appl. Eng. Tech.*, **2**(1) (2014)
29. H. C. Cheng, M.C. Chiu, *I. J. on Smart Sens. and Intel. Sys.*, **7**(3) (2014)